

What topics will we study?

Who will the teachers be?

Is it hard?

# Welcome to Applied Science



Level 3 Cambridge Technical Extended Certificate

I'm not sure if I really want to take Applied Science or not...

Will Applied Science help me to get in to uni?

Why do we need English and Maths to get on to the course?

**Activity 1:** Stop a stopwatch (use a phone if you have one available) at exactly 1 second.



**Activity 2:** Look in a mirror. Close your eyes for about 10 seconds. Open your eyes. What happens to the size of your pupil?

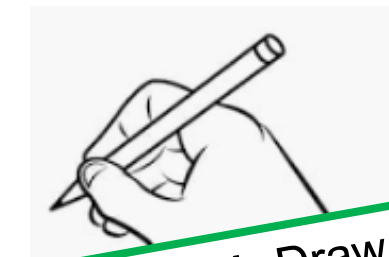


Have a go at as many of the activities that you are able to

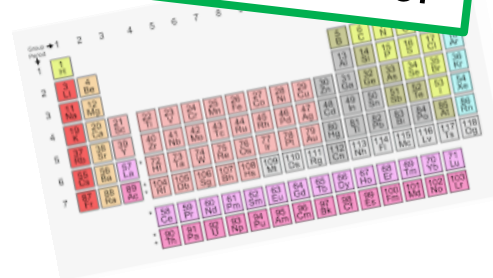
**Activity 3:** Find a penny (or any other coin in your house). Have a guess. How many drops of water do you think you can balance on a penny?



**Activity 5:** In the 'chat' function, type in the name of as many elements that you can think of – don't press enter until told to do so.



**Activity 4:** Draw a diagram on paper that reminds you of GCSE Science.



# Entry Requirements

4 GCSEs Grade 9-6 including:

**Combined Science Grade 5,5**

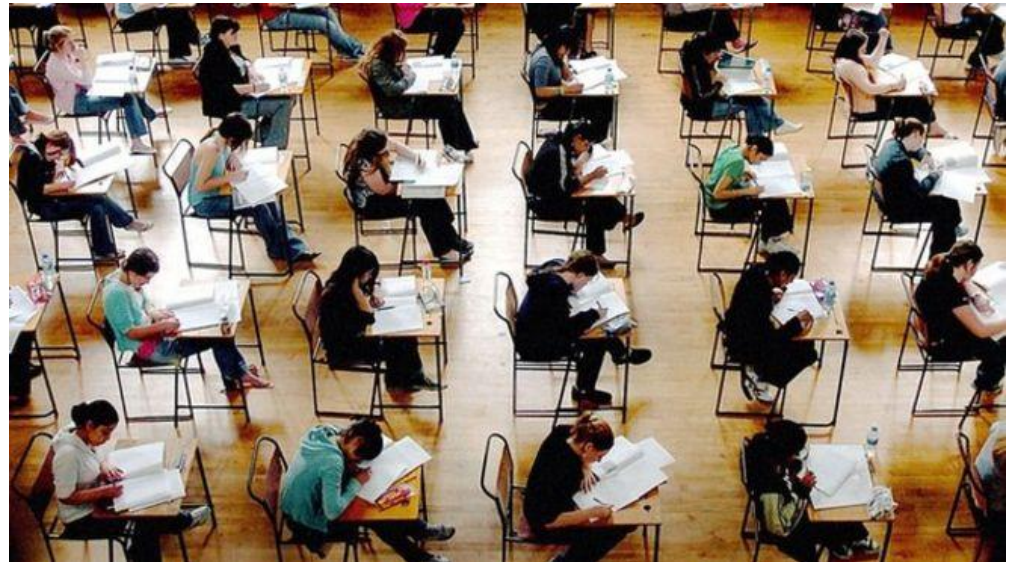
or

**2 Separate Sciences (Biology, with Chemistry or Physics) Grade 5,5**

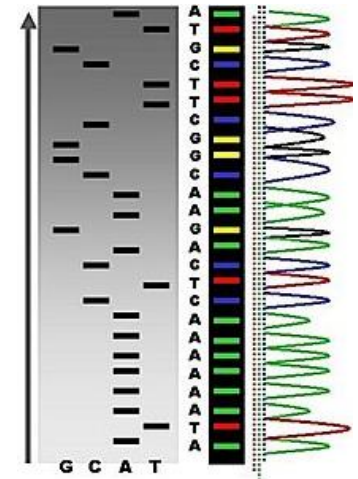
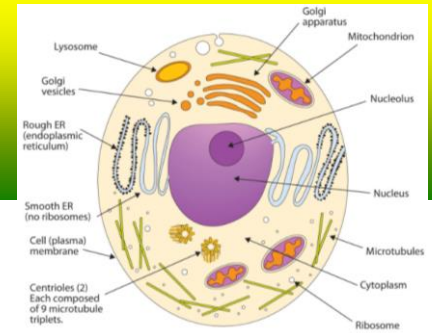
and

**Grade 5 in Mathematics**

**Grade 5 in English**



# Course Overview



Unit	Assessment	Percentage of course
Unit 1 Science Fundamentals	Exam	25%
Unit 2 Laboratory Techniques	Exam	25%
Unit 6 Control of Hazards in the Laboratory	Coursework	17%
Unit 18 Microbiology	Coursework	17%
Unit 21 Product Testing Techniques	Coursework	17%

- 8 lessons per fortnight, usually 2 different teachers
- Science Club for Applied Science help and support
- An interest in Science and good organisation skills required!

# Equipment

What you need to get ready for September:

- A4 folder
- Dividers
- A4 lined paper/ note pad
- Colouring pencils - including red, blue, green, yellow
- Calculator
- Pen, pencil, ruler, rubber, pencil sharpener

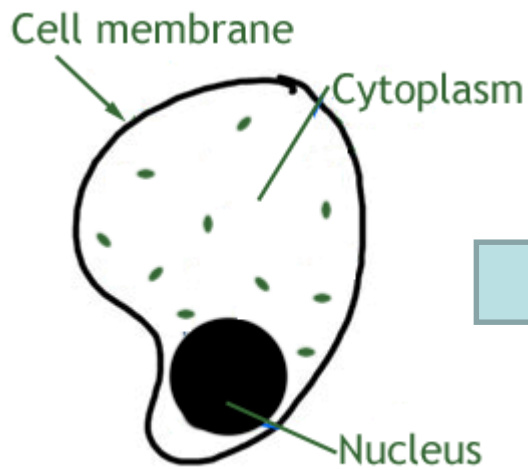
We will provide:

- Lab Book
- Textbook (deposit required, TBC)

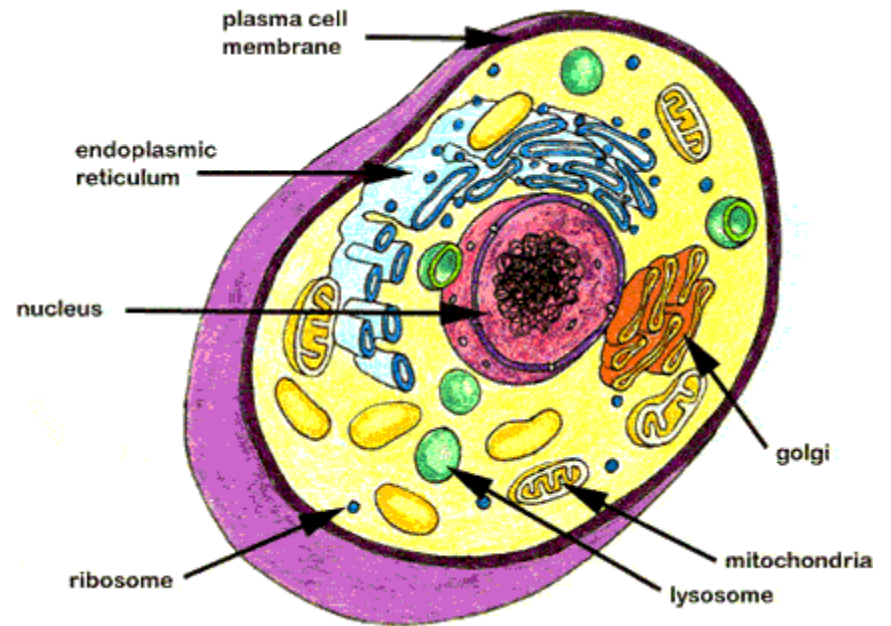




# The Jump



© www.science aid.net



# Support for CTEC Applied Science

Employers	HEIs	Institutes
MedImmune	Keele University	Royal Society for Chemistry
NHS	Northampton University	Sanger Institute
Compton Hospice	Roehampton University	Babraham Institute
ADAS	Bradford University	Cogent
Wellcome Trust	Brighton University	Ellen MacArthur Foundation
The Mallows Company	University of East Anglia	Institute of Chemical Engineers
Martec	University of South Wales	The Science Council
AMEC	Reading University	
ALS Environmental	University of the West of England	
Siemens		
Headway Cambridgeshire		
Huntingdon Life Sciences		
BAE Systems		
Kellogg's		
Veolia		
ABPI		
Dairy Crest		
Anglian Water		
Williams F1 Team		
LGC		